

1708 TERRACE DRIVE

BELMONT, CA 94002



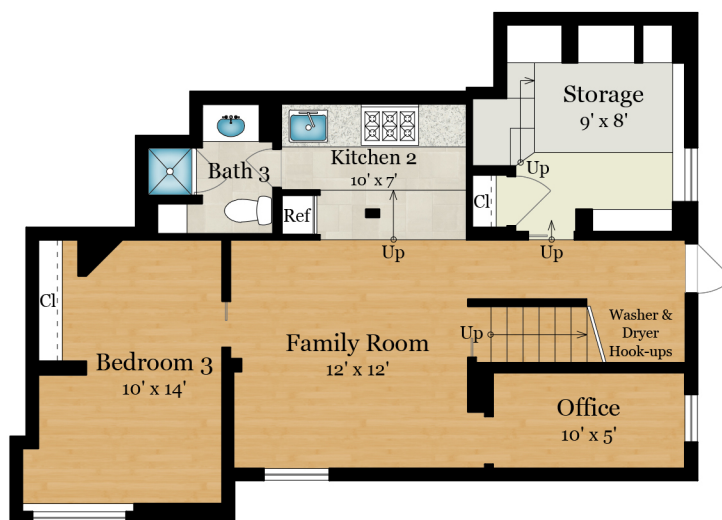
MAIN LEVEL

1,465 SQ FT



GARAGE LEVEL

430 SQ FT



LOWER LEVEL

730 SQ FT

Estimated Total Finished Square Footage: 2,195 SQ FT

Above-Grade: 1,465 SQ FT Below-Grade: 730 SQ FT

Plus 430 SQ FT 2-Car Garage

Calculated per ANSI Standard Z765-2003.

* Estimated Total Finished & Unfinished Square Footage: 2,625 SQ FT

